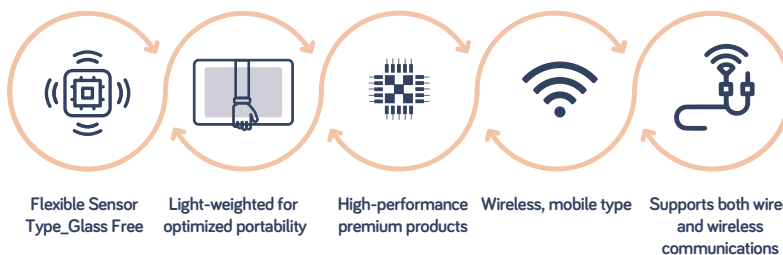
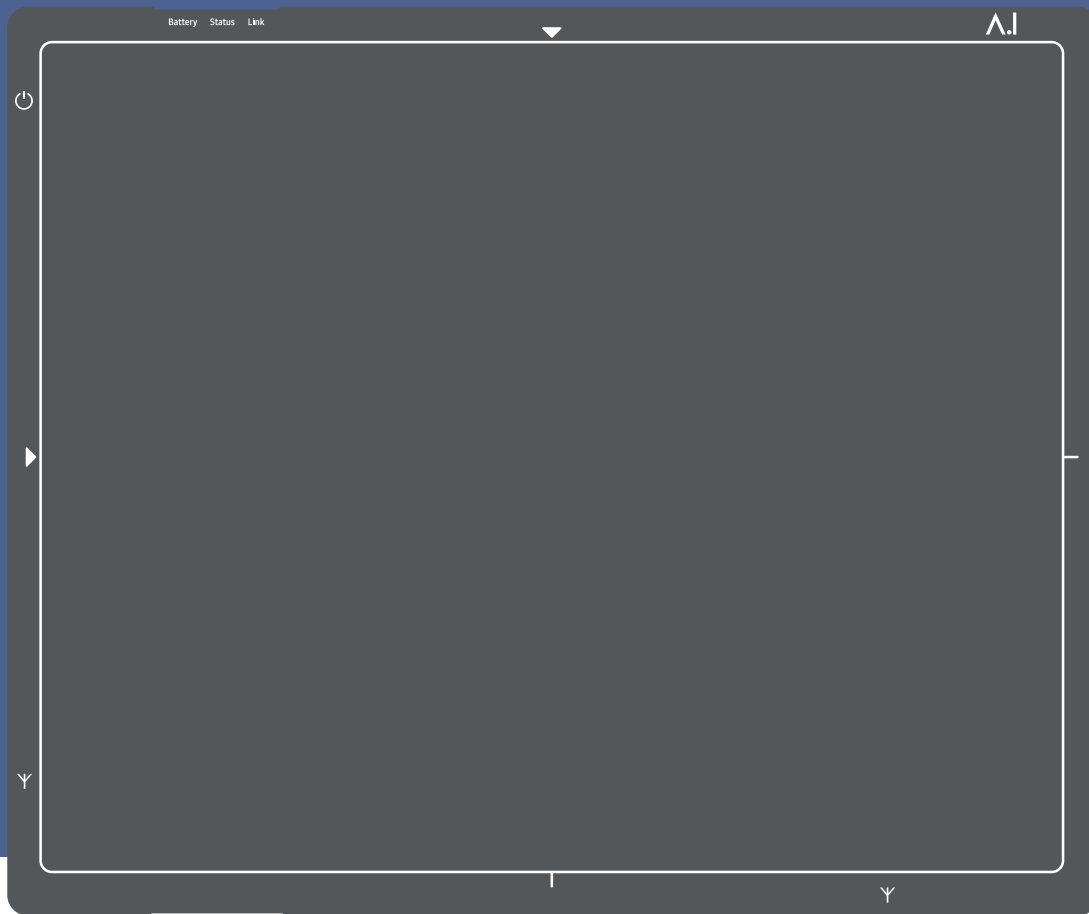




ASPEN IMAGING
HEALTHCARE

iODR1417-GF

Glass-Free Detector for Digital Radiography



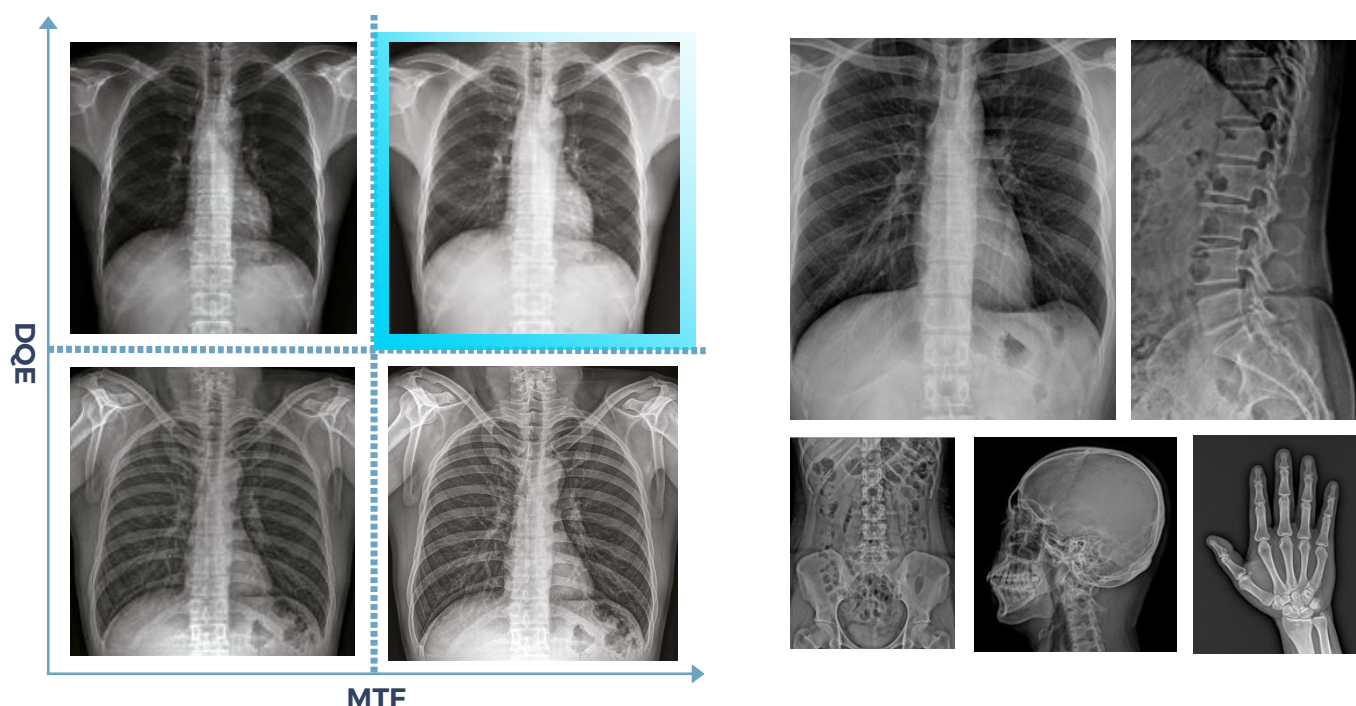
*There are other models with different specifications.



HIGH CALIBER IMAGE QUALITY

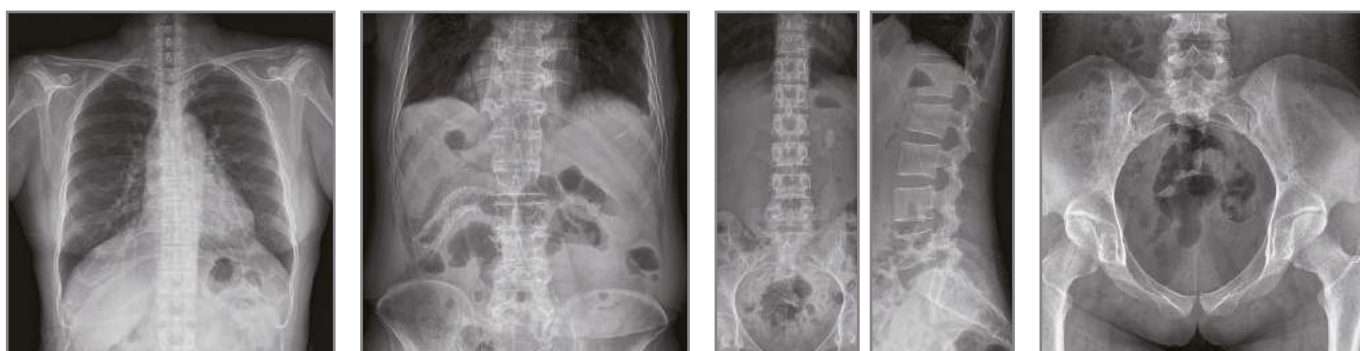
Delivers sharp, detailed images even at low radiation doses. Its advanced design enhances diagnostic confidence, reduces retakes, and ensures reliable performance across all clinical scenarios.

The result: sharper visuals, reduced need for retakes, and greater confidence in every reading.



HIGH IMAGE QUALITY

With iODR1417-GF, it provides exceptional diagnostic clarity. Anatomical details are visualized with high image quality.



Superior image with low dose and advanced features.



FLEXIBLE CSL / GLASS-FREE DETECTOR

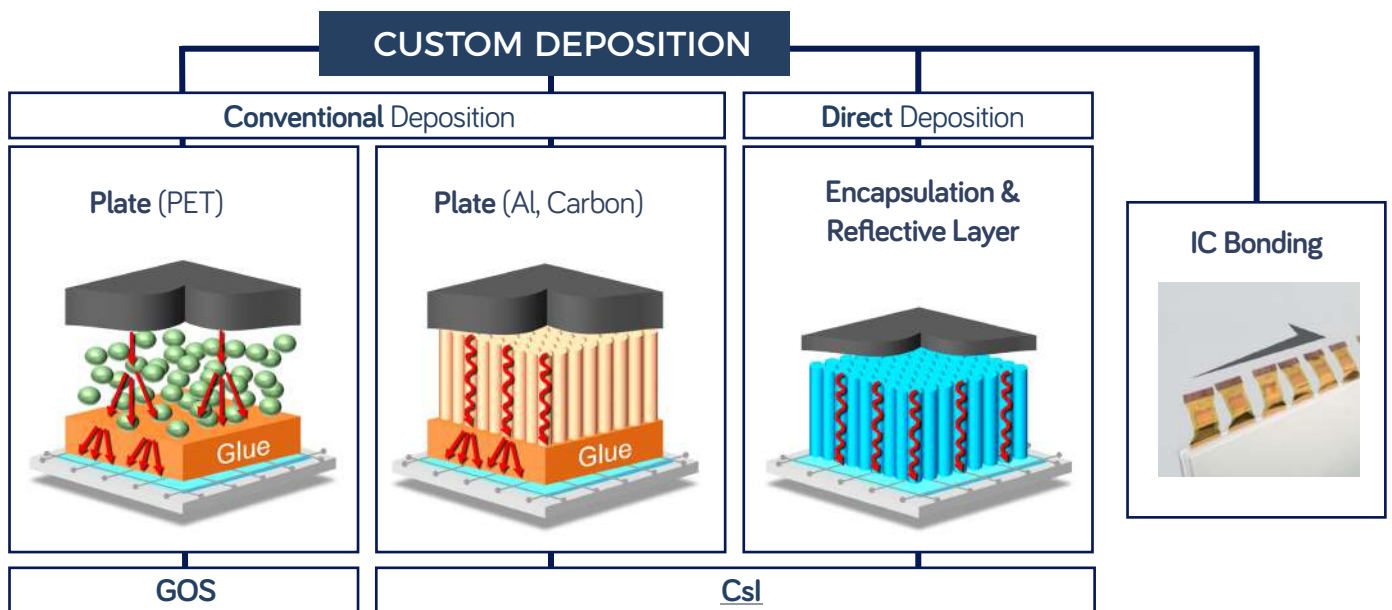


UNBREAKABLE

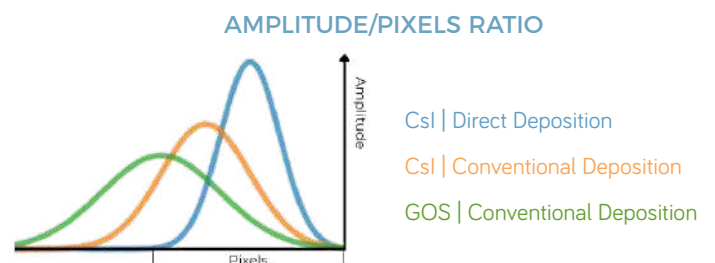


BROKEN GLASS

Absence of glass reduces the risk of internal panel damage.



IMPROVED ROBUSTNESS





HIGH-DURABILITY STRUCTURE

Experience our detector, which incorporates excellent Glass-Free technology for enhanced durability.

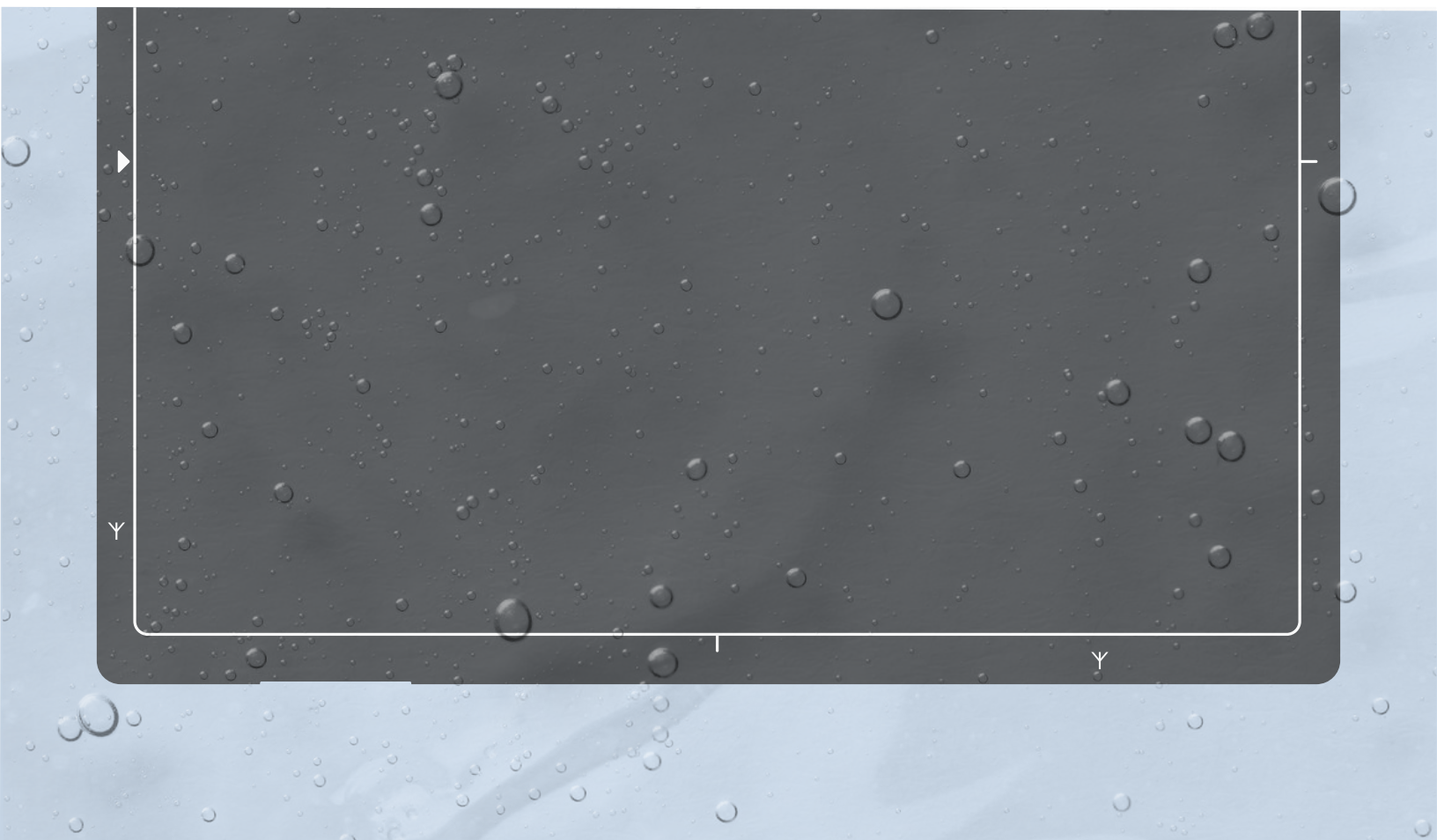
IP56 - WATER RESISTANT AND DUSTPROOF

X-ray detectors may be used in the harsh environment exposed to water and dust. Ensuring the stable operation of the product in any circumstance, iODR1417-GF conforms to the water and dust resistance rating IP56.

More durable product design will provide you with the superior values: better usability, more stable operation and low maintenance cost.

ENHANCED DURABILITY - RELIABLE USAGE IN ANY ENVIRONMENT

iODR1417-GF is designed with robust mechanical parts to provide better product durability. In order to ensure the product quality, we comply with our strict internal reliability test process.

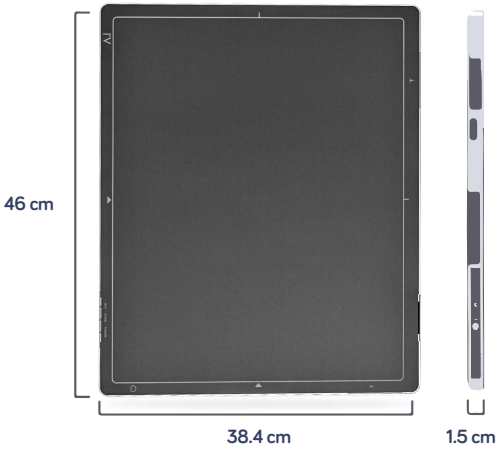




PREMIUM GLASS-FREE DETECTOR

- Remove the carrier glass for breakage and lightweight
- Real-time shock logging

DIMENSIONS



TECHNICAL SPECIFICATIONS

CATEGORY	ITEM	VALUE
PERFORMANCE	Detector Type	a-Si Flexible TFT
	Scintillator	CsI (500μm)
	Active Detector Matrix	3,040 x 2,466 pixels
	Effective Area	425.6 mm x 345.24 mm
	Pixel pitch	140μm
	Grayscale	16 bit
	Spatial Resolution	3.57 lp/mm
	DQE	Up to 76%* (0 lp/mm, Typical)
	MTF	Up to 86%* (0.5 lp/mm, Typical)
	Connectivity	Tethered / Wireless (IEEE 802.11 a/b/g/n/ac, 2.4 GHz/ 5 GHz)
	AED	Available
PHYSICAL	Dimensions (W x D x H)	460 x 384 x 15 mm
	Weight	2.8 kg
	Preview Time	<2 s <2.5 s
	Cycle Time	<5 s <6 s
	Dust/Water-Resistance	IP56
	Battery Charging Time	6 h (Wired) / 3 h (battery charger)
	Battery Operating Time	500 images for 4 hours

*Under optimal test conditions. Actual performance may vary depending on clinical environment and examination protocol.



ASPEN IMAGING
HEALTHCARE

801 Jupiter Rd Suite 200, Plano, TX 75074, USA
sales@aspenimaging.com | (+1) 214-257-0113

WWW.ASPEN-IMAGING.COM

DISTRIBUTED BY



About Aspen Imaging

Aspen Imaging Healthcare is a Texas-based Original Equipment Manufacturer (OEM) providing complete imaging solutions for x-ray distributors and custom designed, private-labeled solutions for OEMs across the Americas.

Founded in 2015, Aspen Imaging has become one of the fastest growing Medical Imaging companies with offices in the United States, Mexico and South Korea.

